



Get Ready For Your

Howth Peninsula Hiking Tour with HOWTH ADVENTURES





What You Can Expect To Do

HOWTH PENINSULA HIKING TOUR

- Meet your Howth Adventure Guide outside Bodega Coffee Shop at Howth Market
- We will hike for 11km offroad up and downhill.
- The Howth Peninsula hiking tour is the most exciting hike in Dublin for fitter groups well able to hike for four hours.
- You will hike through the village to the best view points and across the hill to the south-facing trails overlooking Dublin Bay. Through meadows, along trails, beaches and coves hearing wonderful stories from your guides along the way.
- Follow your leader uphill to the Summit and back down the old tram tracks to the harbour.





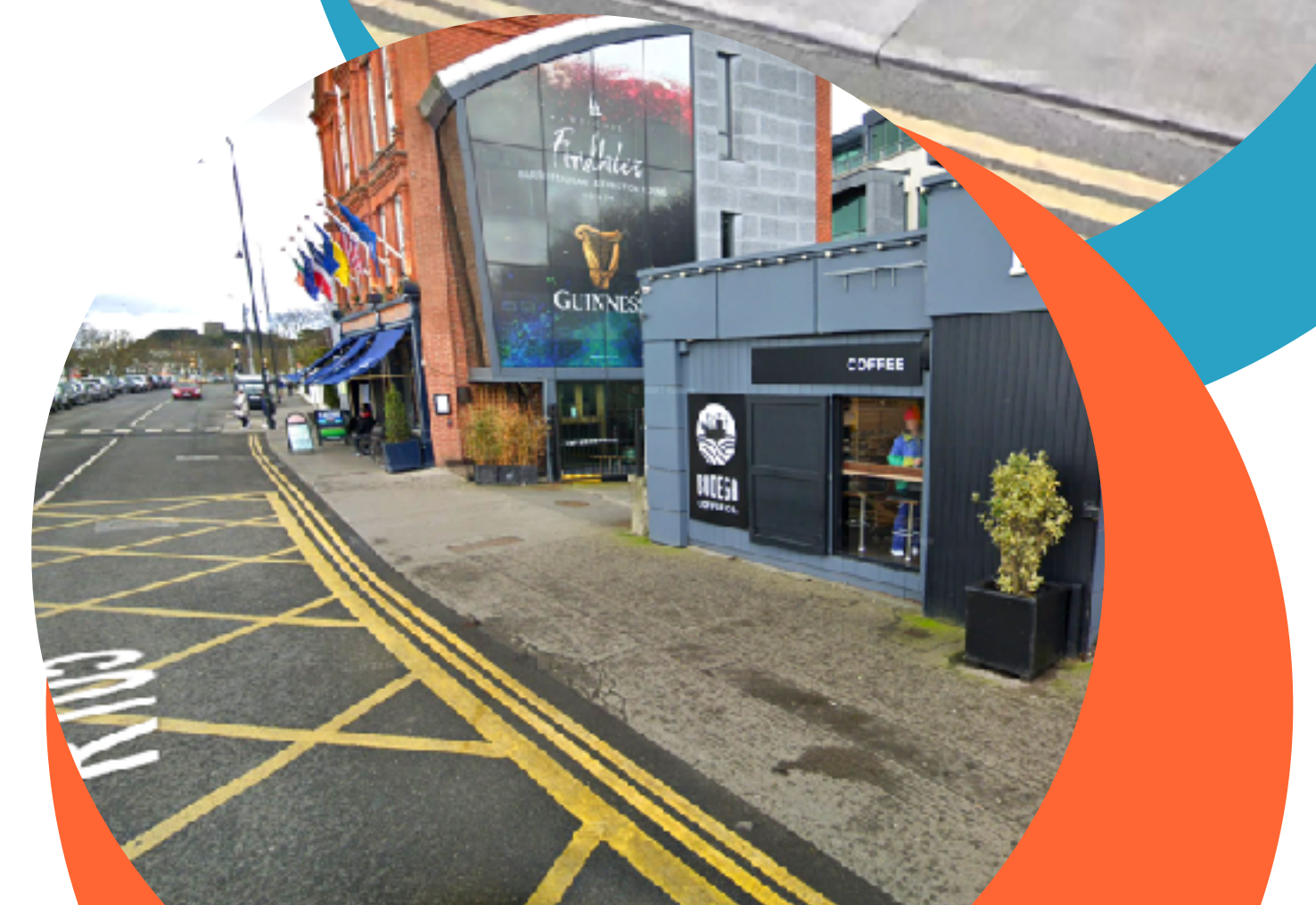
Where You Will Meet Your Guide

The meeting point is outside
Bodega Coffee Shop at Howth Market .

Outside the entrance to
Bodega Coffee Shop
Howth Market
Harbour Road Howth



FIND US ON GOOGLE





How To Get To Us

- WALK / CYCLE**
- If you live nearby, you can walk or cycle to the West Pier in Howth. If you cycle, bring a lock to secure your bike.

CAR

- You can be dropped off or park in the harbour area near the West Pier. Be prepared for it to be busy; you may need to wait a while to find a free space if you are parking.

BUS / TRAIN

- You can take the H3 or 6 bus direct to HOWTH. Ask the driver to let you off at HOWTH HARBOUR stop. Or take a DART train towards Howth and get off at HOWTH STATION stop. For both you then walk 5mins to the end of the West Pier.





Who Will Meet You

- You will meet your Howth Adventures guide outside the front entrance to Bodega Coffee Shop at Howth Market. They will be holding a white Howth Adventures flag and will be looking out for you.
- If you can't find them please try calling **Zack on +353 86 205 3453**
- Our team are very helpful and friendly and will do their best to make sure you are comfortable and have a great experience.
- **Please let them know if you need any assistance before or during the tour.**

It's very important that you listen to your guide at all times.





What To Bring

- You will also need to wear clothes and shoes that you are warm and comfortable wearing, preferably sturdy trainers or hiking shoes.
- We also suggest you bring a **rainproof jacket, hat, sunglasses, a bottle of water and a snack**. We have hats and sunglasses in case you find that you need them as sensory tools.
- It's always a good idea to **wear sun protection cream**. Put this on before you come and bring it with you so you can put on more as needed.





How Long is the Peninsula Hiking Tour

You can expect to be
hiking for 4 hrs





Who Can Come With Me

- **If you are an adult and you need support, bring a trusted adult with you.**
- **If you are under 16,** come with parent(s), guardian(s), brothers, sisters or other family members.
- These people can book the tour and come with you or they can meet you again after the tour





Toilets

Before and After the Tour - Look out for the toilets at the entrance to the West Pier.

- It is a good idea to use the toilets before the hike. They are situated at the entrance to the **West Pier beside Howth Train Station** opposite the meeting point at Howth Harbour. During the tour
- There are also toilets at the **Summit Car Park**, which is towards the end of the hike.





What If.....

...you feel tired or worried

- Please tell your Howth Adventures guides about how you are feeling immediately. They are there to assist and will always be happy to help you.
- **...If you need to leave before the hike is finished, don't worry we will do our best to facilitate**





Looking Forward to Meeting You

