



Get Ready For Your

Howth Coastal Hike with HOWTH ADVENTURES





What You Can Expect To Do

HOWTH COASTAL HIKING TOUR

- Meet your Howth Adventure Guide outside Bodega Coffee Shop at Howth Market
- We will hike for 8km, uphill for the first 4km and then downhill for the second half of the hike
- The hiking tour will take you along Howth Harbour, up through the village to St Mary's Abbey and through the woodland to the Ben of Howth which is the highest point on the peninsula with spectacular views of Dublin.
- Follow your guide hearing lots of local stories to the Summit and then back down the famous cliff path to the harbour.





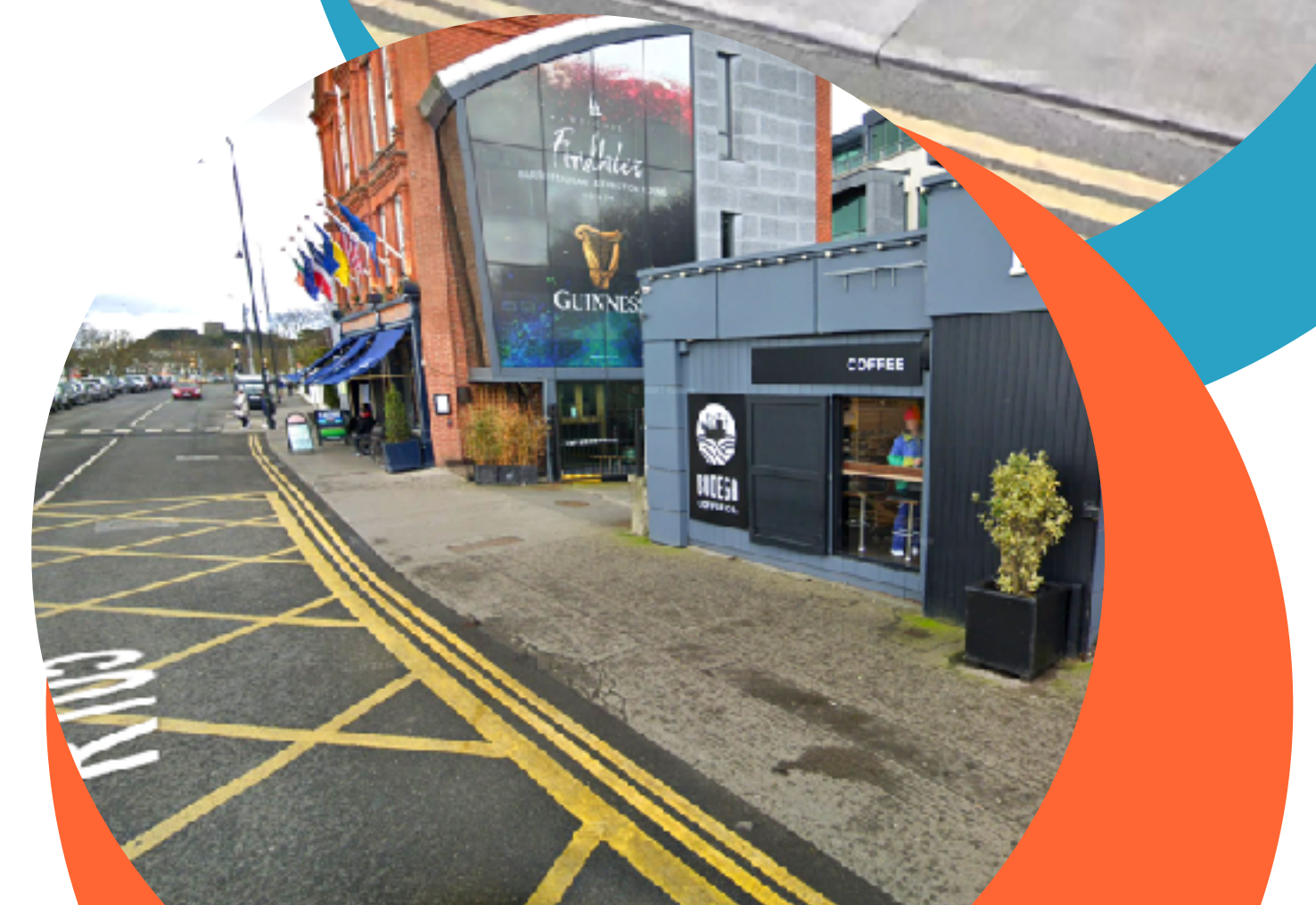
Where You Will Meet Your Guide

The meeting point is outside
Bodega Coffee Shop at Howth Market .

Outside the entrance to
Bodega Coffee Shop
Howth Market
Harbour Road Howth



FIND US ON GOOGLE





How To Get To Us

WALK / CYCLE

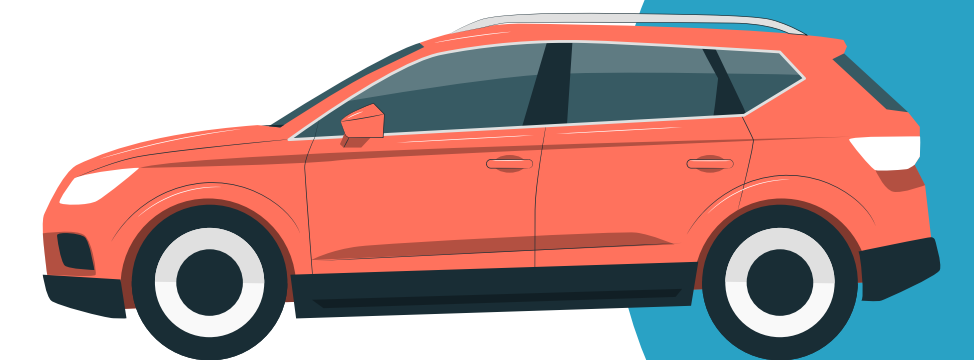
- If you live nearby, you can walk or cycle to the West Pier in Howth. If you cycle, bring a lock to secure your bike.

CAR

- You can be dropped off or park in the harbour area near the West Pier. Be prepared for it to be busy; you may need to wait a while to find a free space if you are parking.

BUS / TRAIN

- You can take the H3 or 6 bus direct to HOWTH. Ask the driver to let you off at HOWTH HARBOUR stop. Or take a DART train towards Howth and get off at HOWTH STATION stop. For both you then walk 5mins to the end of the West Pier.





Who Will Meet You

- You will meet your Howth Adventures guide outside the front entrance to Bodega Coffee Shop at Howth Market. They will be holding a white Howth Adventures flag and will be looking out for you.
- If you can't find them please try calling **Zack on +353 86 205 3453**
- Our team are very helpful and friendly and will do their best to make sure you are comfortable and have a great experience.
- Please let them know if you need any assistance before or during the tour.

It's very important that you listen to your guide at all times.





What To Bring

- You will also need to wear clothes and shoes that you are warm and comfortable in and good sturdy trainers or hiking shoes.
- We also suggest you bring a **rainproof jacket, hat, sunglasses, and a bottle of water.**
- It's always a good idea **to wear sun protection cream.** Put this on before you come and bring it with you so you can put on more as needed.





How Long is the Coastal Hiking Tour

You can expect to be
hiking for 3 hrs





Who Can Come With Me

- **If you are an adult** and you need support, bring a trusted adult with you.
- **If you are a child**, come with parent(s), guardian(s), brothers, sisters or other family members.
- These people can book the tour and come with you or they can meet you again after the tour.





Toilets

Before and After the Tour - Look out for the toilets at the entrance to the West Pier.

- It is a good idea to use the toilet before you come on the hike.
- They are beside the train station opposite Howth Market.

During the tour

- There are toilets at the Summit which is approximately halfway through the tour.





What If.....

...you feel tired or worried

- Please tell your Howth Adventures guides about how you are feeling immediately. They are there to assist and will always be happy to help you.
- **Let your guides know if you need to leave at any time during the hike and they will help to arrange**





Looking Forward to Meeting You

